

LO
OK
BO
OK

2026

HANDMADE
LAMPS

WORLD ONE

INTRODUCTION



Inspired by the timeless beauty of craftsmanship and the powerful stories behind design, WorldOne was born to celebrate and showcase the furniture not just as objects, but as pieces of art.

A place where *curated artistry* from around the world meets *impactful storytelling*.

WORLD
ONE





Each creation carries light, character, and a story worth telling, **transforming spaces into experiences.**

The textures, the natural patterns, the subtle gradients, the touch of wood, the glow of light, each detail is an invitation to pause, to sense, to feel, and to see.

They are not just materials; they are the essence of living the present moment in a meaningful environment.







SILVESTRE ARTESANOS

“Each lamp illuminates not only your space, but also the living legacy of Colombia’s cultural traditions and artisanal mastery.”

A heritage preserved through time and now carried forward by a new generation of young artisans.”

THE STORY

Silvestre Artesanos **has reinterpreted artisanal heritage**, bringing it into the design industry and showcasing Colombian craftsmanship in homes and spaces around the world.



Excellence is at the core of the brand; each piece is crafted under the **highest quality standards**, with meticulous attention to detail.

TECHNIQUE

Through **traditional crafts** such as **basketry**, **fique**, **iraca palm weaving**, and **wickerwork**, *combined with innovative processes and reinterpretations of ancestral stitches*, Silvestre Artesanos weaves a dialogue between **heritage and contemporary design**.

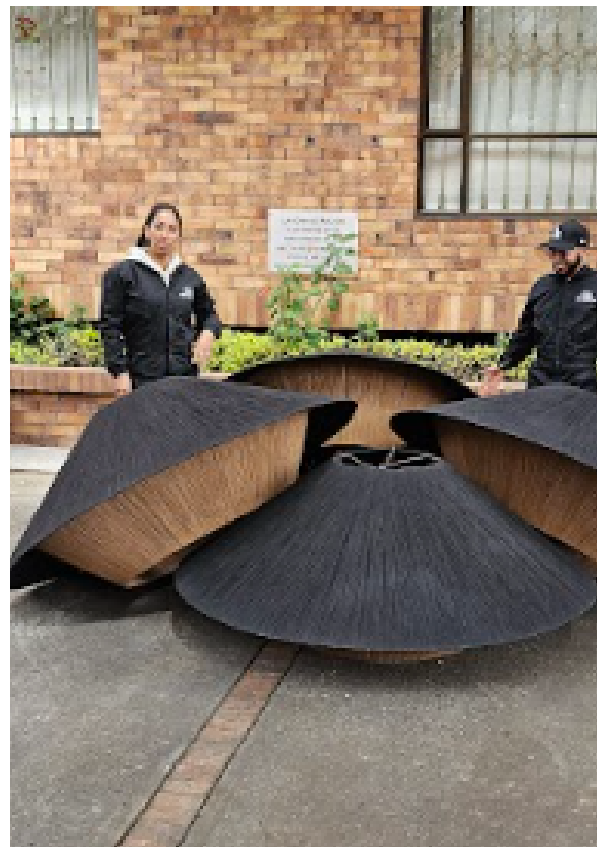


Seeking to re-signify and adapt traditional craftsmanship with new generations, **the work embraces young artisans who value ancestral knowledge and materials with history.**

In their hands, traditions not only endure but also evolve, finding new expression within a contemporary production model, without ever losing their essence.



Where young hands transform ancestral craft into tomorrow's design!



CATALOG



ALDEA

Handwoven in natural wicker and framed in iron with a soft copper finish, this piece offers versatility and elegance. Whether installed close to the ceiling or suspended at the desired height, it brings warmth, texture, and a refined presence to any space.



Dimensions

- Ø 80 cm × H 30 cm
- Ø 120 cm × H 35 cm
- Ø 150 cm × H 40 cm
- Ø 180 cm × H 40 cm
- Ø 250 cm × H 45 cm



ALTRATO

Featuring a removable lampshade handwoven in natural fique over an electrostatically painted iron frame, the Atrato Lamp rests atop a 1.80-meter tall black iron floor structure. Its presence brings texture, warmth, and a sculptural elegance to any space.

Dimensions

Shade: Ø 70 cm × H 50 cm

Total height: 180 cm





CHIBCHA

Handcrafted from Iche straw, this lamp features a spiraled woven top that flows into a lower section of loose strands, creating natural movement and texture. Its golden and toasted tones cast a warm, inviting glow, making it a captivating focal point in any space.

Dimensions

Ø 35 cm × H 80 cm





CANDELARIA

A floor lamp that unites heritage and color. Its upper section is handwoven in natural fique, while the lower section is adorned with vibrant Guajira threads. The entire piece rests on an iron structure finished with electrostatic paint, blending strength with artisanal beauty.

Dimensions

Ø 30 cm × H 135 cm

LOTO

A nature-inspired design, crafted entirely from wood using a delicate bending technique that forms twelve petal-shaped elements. An ode to organic beauty, reinterpreted through contemporary craftsmanship.



Dimensions

Ø 32 cm × H 36 cm
(excluding cable)





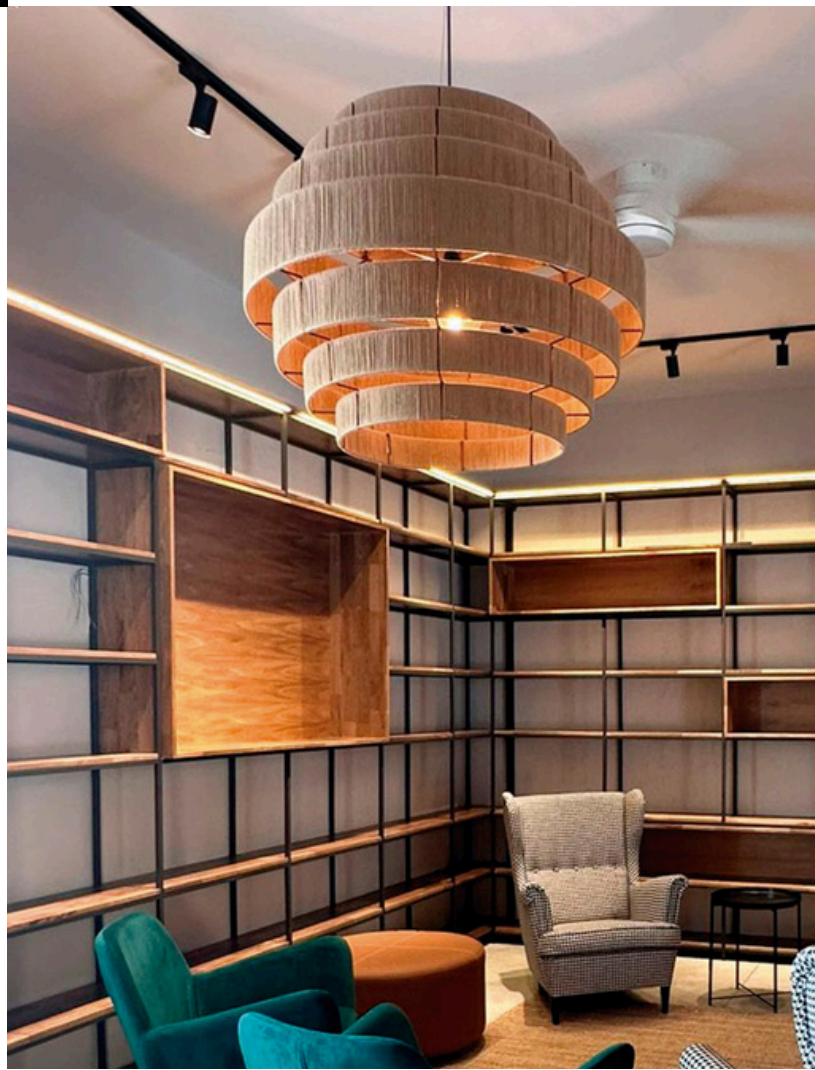
MONSERRATE

Handwoven with natural fibers and brown Guajira thread, the Monserrate Lamp is built on an iron structure with a brown electrostatic paint finish. A piece that unites artisanal beauty with durability, its generous scale makes it an ideal centerpiece for spacious interiors where tradition meets contemporary design.

Dimensions

Ø 90 cm × H 60 cm

Ø 120 cm × H 85 cm



GUADALUPE

Handwoven in Guajira thread over an iron frame finished with electrostatic paint, this lamp is offered in black, brown, beige, or harmonious color combinations. Its refined texture and warm presence bring artisanal elegance and subtle sophistication to any space.



Dimensions

Ø 40 cm × H 18 cm

Ø 75 cm × H 35 cm

Ø 95 cm × H 45 cm

Ø 150 cm × H 75 cm

Ø 180 cm × H 90 cm



GORGONA

Handwoven in yaré vine, the Gorgona Lamp merges traditional basketry techniques with a wooden top piece. Its natural hues cast a warm, inviting light, creating a cozy and elegant ambiance in any space.



Dimensions

Ø 60 cm

Ø 80 cm





INIRIDA

Handcrafted and woven by hand in champagne-colored Terlenka thread, this piece rests on an iron structure finished in matching electrostatic paint. Its delicate texture and soft, filtered light create an intimate and elegant atmosphere, blending artisanal heritage with contemporary design.

Dimensions

Ø 35 cm × H 40 cm

Ø 42 cm × H 50 cm





MUISCA

Handcrafted from Iche straw collected in the highlands of Boyacá, woven over an iron frame. The braided top flows into loose strands, creating natural movement and a distinctive, organic silhouette.

Dimensions

Ø 60 cm × H 40 cm

Measurements may vary within 5–10 cm.



CAYUCO

Woven by hand in yaré vine over a copper-toned iron frame, the design features two bulb sockets and fringes that can be customized. Crafted exclusively to order, it transforms light into a sculptural statement, blending artisanal mastery with contemporary elegance.



Dimensions

Ø 60 cm × L 150 cm × H 40 cm

Custom sizes available.



HELICONIA KRAFT

Crafted by hand in woven craft cord over an iron frame finished with electrostatic paint, this lamp is offered in three distinct shapes and sizes. Its tactile texture and subtle presence bring warmth and refined elegance to any space.



Dimensions

Ø 22 cm (Small)

Ø 32 cm (Medium)

Ø 50 cm (Large)





HELICONIA ALGODON

Crafted by hand in woven craft cord over an iron frame finished with electrostatic paint, this lamp is offered in three distinct shapes and sizes. Its tactile texture and subtle presence bring warmth and refined elegance to any space.

Dimensions

Ø 22 cm (Small)

Ø 32 cm (Medium)

Ø 50 cm (Large)



USIACURÍ

Woven by hand in natural fique or black Terlenka thread, the dense, intricate weave reveals hours of meticulous craftsmanship. Its refined texture casts a soft, inviting light, bringing warmth and artisanal elegance to any space.



Dimensions

Ø 60 cm × H 40 cm

MEDUSA

Handwoven in Guajira thread over an iron frame finished with electrostatic paint, this design is built around three concentric rings. Depending on the size, it accommodates one to three bulbs, creating a striking play of light and texture that transforms any interior.



Dimensions

Ø 80 cm × H 80 cm

Ø 120 cm × H 120 cm

Ø 150 cm × H 150 cm

OROCUÉ

Upholstered in wicker straw and adorned with colorful Miñafe and Teco accents, this piece rests on a copper-toned iron frame. The combination of textures and vibrant details creates a warm, artisanal presence in any space.

Dimensions

Ø 40 cm × H 45 cm

Ø 60 cm × H 60 cm





OCAÑA

Upholstered in wicker matting and accented with customizable Millaré trim and colorful fringes, this piece rests on a copper-toned iron frame. Its layered textures and vibrant details bring warmth and artisanal elegance to any interior.

Dimensions

Ø 40 cm × H 45 cm

Ø 60 cm × H 60 cm

OROPÉNDOLA

Handcrafted using a macramé technique in jute thread, this lamp is offered in two versions, one featuring an exterior wooden top and one without. Its intricate weave creates texture and warmth, bringing artisanal charm to any space.

Dimensions

Ø 20 cm × H 70 cm (with wooden top)

Ø 23 cm × H 60 cm (without wooden top)



MAGUEY

Handwoven in natural fique using traditional basketry techniques, this lamp rests on an iron frame finished with electrostatic paint. Subtle blue or black accents enhance its texture, bringing artisanal warmth and refined elegance to any space.

Dimensions

Ø 28 cm × H 35 cm

Ø 40 cm × H 50 cm

Ø 55 cm × H 70 cm



LETICIA

Woven by hand in 100% cotton yarn using a delicate crochet technique, this lamp is framed with iron rings finished in electrostatic paint. Its intricate texture and soft silhouette bring warmth and artisanal elegance to any interior.

Dimensions

Ø 30 cm × H 45 cm

Ø 45 cm × H 60 cm





PROVIDENCIA

Bone-white cotton yarn is meticulously handwoven and accented with a decorative orbit in brown Guajira thread, resting on a sturdy iron frame. The interplay of textures creates a striking piece that feels both contemporary and rooted in tradition.

Dimensions

Ø 60 cm × H 70 cm

Ø 90 cm × H 100 cm

Ø 120 cm × H 130 cm

MAICAO

Woven in wicker matting over a black iron frame, this lamp features three concentric sections delicately edged with black Millaré ribbon. Its layered design brings depth, texture, and artisanal elegance to any interior.

Dimensions

Ø 45 cm × H 30 cm



JERICÓ

Traditional weaving techniques in wicker are combined with a copper-toned iron frame, forming designs that vary from diagonal and straight to zigzag patterns. Available in multiple shapes and sizes, each piece brings texture, movement, and artisanal elegance to any space.

Dimensions

Ø 45 cm × H 45 cm (Round)

Ø 55 cm × H 35 cm (Oval)

Ø 42 cm × H 52 cm

Ø 27 cm × H 55 cm



QUIMBAYA

Handcrafted from natural bejuco and finished with a protective wood sealant, this lamp can be personalized with colorful cotton pom-poms. Its textured form and optional vibrant accents bring warmth, movement, and artisanal charm to any interior.



Dimensions

Ø 55 cm × H 55 cm

(With or without pompoms)

RÁQUIRA

A table lamp featuring a clay base and a handwoven double-layered shade in thread. The copper-colored threads create a curtain-like effect, adding texture and depth, with both layers customizable to suit any interior.



Dimensions

Ø 28 cm × H 50 cm



COVEÑAS

Handcrafted in natural raffia, this lamp is woven in three-layered sections over a sturdy iron frame. The interplay of textures and layered forms creates a warm, artisanal presence in any space.



Dimensions

Ø 30 cm × H 60 cm

Ø 50 cm × H 80 cm

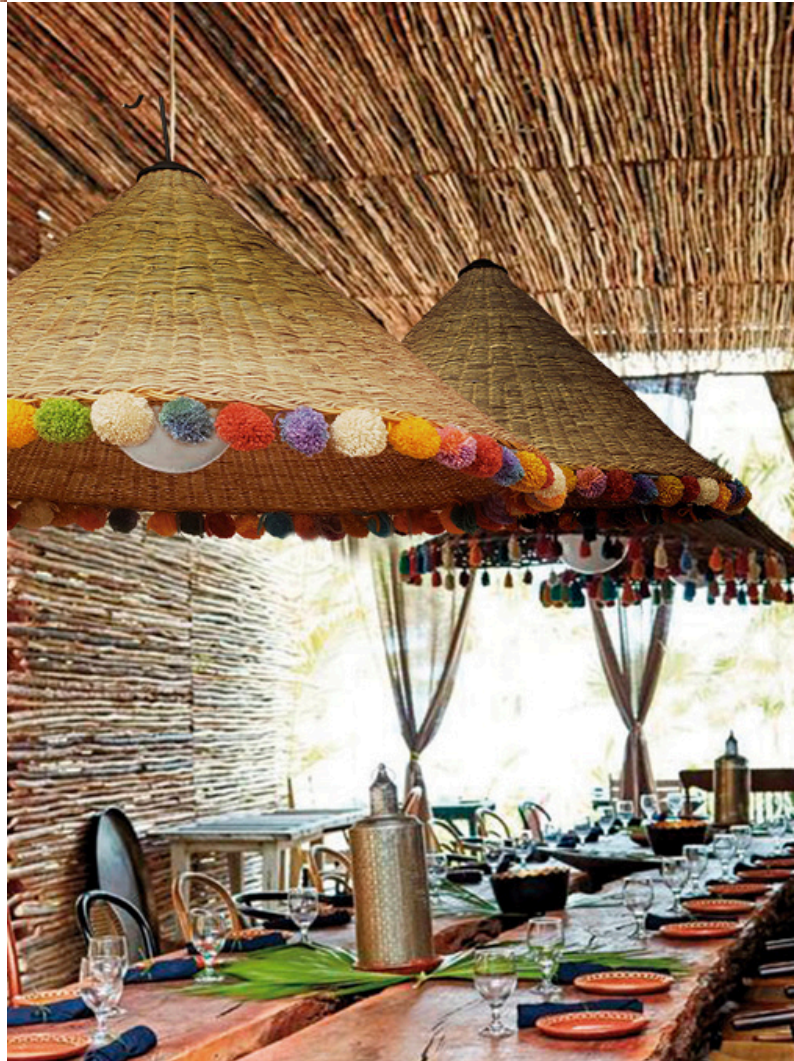


COCORA

A sculptural form handwoven in bejuco, free from internal framing, its organic silhouette evokes natural elegance and movement. Multicolored cotton tassels can be added, bringing playful rhythm and artisanal charm to the composition.

Dimensions

Ø 80 cm × H 40 cm



IGUAQUE

Handwoven in varnished wicker over a copper-toned iron frame, its textured form evokes natural rhythm and artisanal refinement, bringing warmth and sculptural elegance to any space.

Dimensions

Ø 60 cm × H 70 cm



ZAMBA

Thin, varnished wicker rods are meticulously handwoven over a copper-toned iron frame, creating a sculptural form that balances artisanal craftsmanship with understated elegance.



Dimensions

Ø 60 cm × H 60 cm

Ø 80 cm × H 80 cm



MACARENA

Beige Guajira thread is handwoven over an iron frame finished with electrostatic paint, creating a textured silhouette that exudes warmth and artisanal elegance.

Dimensions

Ø 25 cm × H 40 cm

Ø 40 cm × H 60 cm





MOMPOX

Handwoven in natural esparto, this lamp stands free of any metal structure, showcasing the organic texture and sculptural elegance of traditional craftsmanship.

Dimensions

Ø 45 cm × H 45 cm



MULATA

Handwoven entirely from wicker rods over a self-supporting wicker frame, this piece celebrates natural texture and artisanal craftsmanship. Its sculptural form casts a warm, inviting presence, transforming any space with understated elegance.

Dimensions

Ø 60 cm × H 60 cm

Ø 80 cm × H 80 cm



MACONDO

Handwoven in yaré vine, this lamp features customizable colored fringes that bring movement and personality to its sculptural form. The iron frame ensures durability while highlighting the artisanal craftsmanship and natural texture.



Dimensions

Ø 60 cm × H 35 cm

Ø 90 cm × H 40 cm

(including fringes in different colours)





KIDS BALLOON LAMP

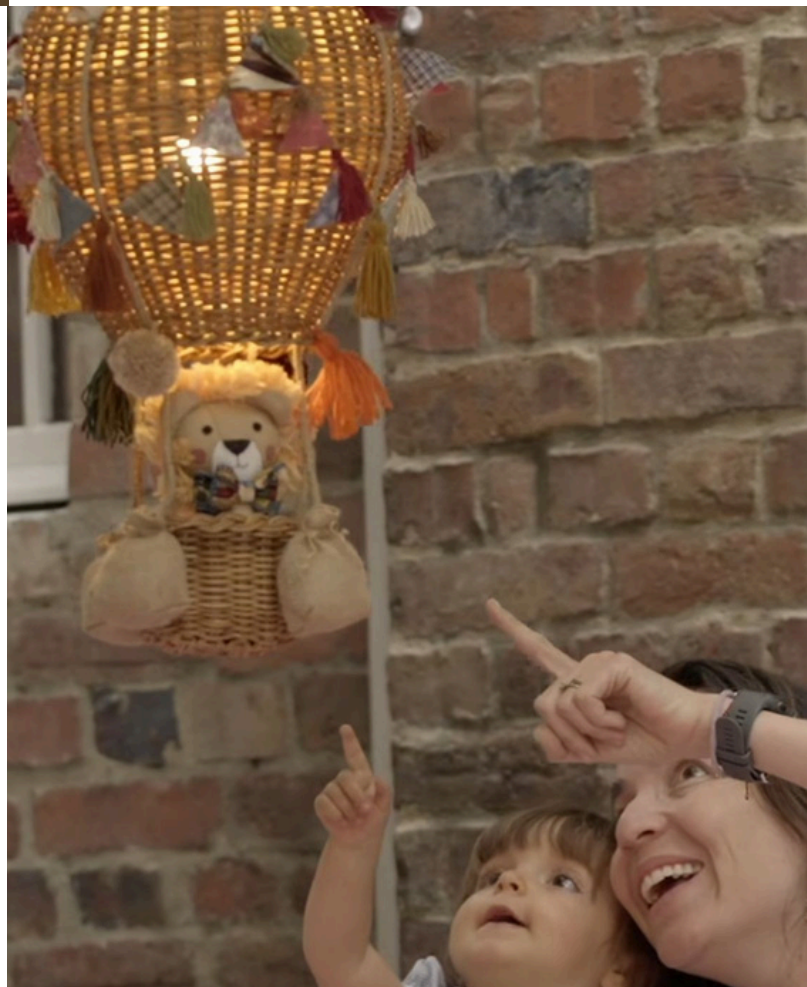
A magical balloon for little dreamers.

This unique handmade craft lamp is shaped like a hot air balloon, woven with natural fibers, and decorated with colorful tassels and tiny fabric flags.

Soft, warm light glows from inside, creating a cozy and dreamy atmosphere in any child's room.

Dimensions

Ø22 × H40 cm



CUSTOMIZED

Bringing your ideas to life, **the internal design atelier collaborates with you to create bespoke lighting pieces tailored to your project.**

Whether you come with sketches, inspiration, or a concept, we guide you through every step (from 3D renderings and material selection to structural design), ensuring each creation is as unique as your vision.



SEA-READY DESIGN

Many of the designs can be adapted for environments with **high humidity or saline conditions**. In these cases, iron structures are replaced with stainless steel, and synthetic materials such as polyester thread or PLC cord take the place of natural fibers.



For projects exposed to special environmental conditions, we are happy to recommend the most durable materials, ensuring that every piece maintains its beauty and craftsmanship over time.

SILVESTRE ARTESANOS
CRAFTED IN COLOMBIA BY ARTISAN HANDS.



FEATURE BY:

WORLDONE

TRUSTED CLIENTS

HOSPITALITY



F&B



RETAIL SECTORS



Lets Connect!

If you are a **hotel, restaurant, architect, home designer, or any business looking to feature our beautifully curated catalog of brands**, do not hesitate to contact us.

We will be delighted to assist you with exceptional service, the best market prices, seamless shipping, and flawless quality!



DANIELA MANRIQUE

Marketing and Partnerships Director



Dmanrique.worldone@gmail.com



Linkedin:
<https://www.linkedin.com/in/daniela-manrique/>



[+49 162 186 05 33](tel:+491621860533)



CHARLOTTE REBIEN

Commercial Director



Charlotte.Rebien.worldone@gmail.com



Linkedin:
<https://www.linkedin.com/in/charlotte-rebien-400a7290/>



[+49 172 4011593](tel:+491724011593)



Thank You

At WorldOne, we are a bridge connecting businesses with exceptional brands that make a difference.

We curate each brand with care, ensuring quality, sustainability, and meaningful design.

Through mindful partnerships and personalized guidance, we elevate spaces, enhance experiences, and bring stories to life.

We proudly showcase Silvestre Artesanos and 111 Furniture, creators who go beyond design to craft lasting value, beauty, and purpose.

WORLDONE